

FZ03/1 & EErgo Z

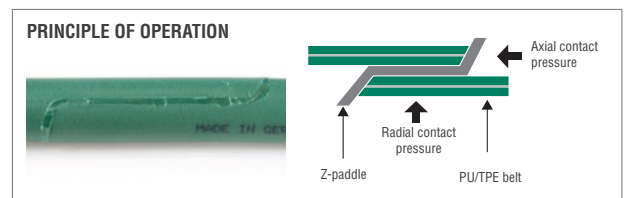
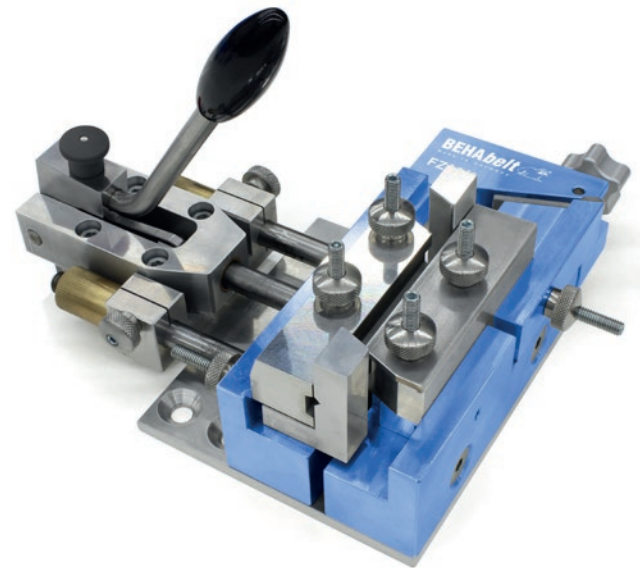
Overlap welding set consisting of guide unit and EErgo Z

Product features FZ03/1

- Professional and easy to use guide clamps for overlap welding of reinforced profiles.
- Completely tool-free adjustment of the welding position for welding with Z-paddle.
- Uniform contact pressure over the entire welding surface of the profile for perfect welding quality
- Application range for round belts from 6-20mm and for V-belts from 8x5mm to 32x20mm.
- Safe handling with high repeat accuracy of the welding position thanks to toggle lever.
- Scope of delivery includes assembly option with table mounting and vice.
- Unique contact pressure in radial and axial alignment!

Product features EErgo-Z

- Robust, fibreglass-reinforced and ergonomic handle.
- Special Z-paddle for overlap welding with guide clamp FZ03/1.
- Correct temperature setting thanks to predefined buttons per welding material (PU 280 °C / Polyester 240 °C).
- Precise and stable temperature control for avoidance of temperature fluctuations under different welding conditions
- No adhesion of PU and TPE material thanks to Teflon-coated welding paddle
- Matching magnetic storage stand for safe storage of the welding paddle even when welding in the system



Compact guide unit for overlap welding by means of Z-paddle with vertical and horizontal contact pressure



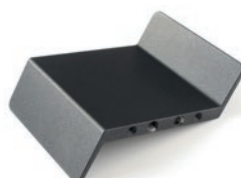
Hot paddle welding tool EErgo with Z-paddle

Spare parts

Spare paddle EERGO Z

Order No. **FBWEE024**

Dimensions (WxDxH):
approx. 100 x 65 x 6 mm



Scope of supply:

1 pc. Set FZ03/1 (consisting of: FZ03/1, EErgo Z, Storage stand with magnetic base, AS04, SE02, 1 set of Clamping pieces of your choice, table mounting, Carrying case, Instruction manual)

Description

FZ03/1-Set
8,0 kg, approx. 550 x 210 x 350 mm (WxDxH)

Order No.
FBWFZ03/1A

EErgo Z
450 g, approx. 210 x 210 x 55 mm (WxDxH)
Power: 240 W

FBWEE026

FZ03/1 Guide unit
3,3 kg, approx. 210 x 250 x 70 mm (WxDxH)

MBWFZ03/1A