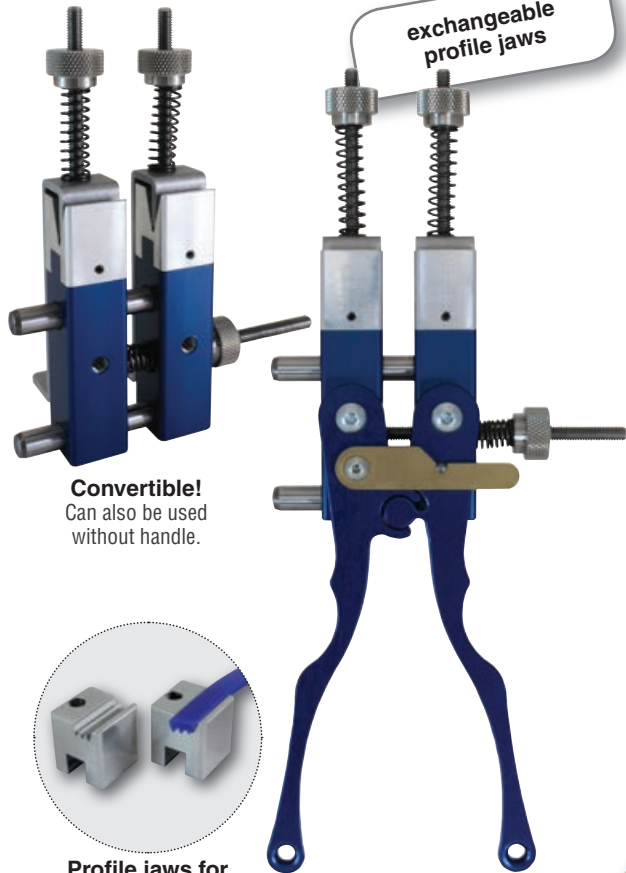
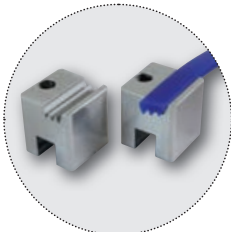


exchangeable
profile jaws



Convertible!

Can also be used
without handle.



Profile jaws for special profiles

Dimensions (HxWxD): 240x125x50 mm
140x195x50 mm without handle
Weight: approx. 365 g
approx. 320 g without handle

Description
FZ01 Vario

Order No.
FBWFZ01V

FZ01 Vario

Guide clamp FZ01 Vario Metal can be assembled in two operating modes. With and without handle!

Convenient and tough for round belts up to \varnothing 10 mm and V-belts up to profile 10 (Z).

Exchangeable profile jaws allow custom profiles to be spliced easily.

Highlights

- Fast, reliable and exceptionally precise connecting of PU and TPE profiles.
- Special inserts for: PJ2 and PJ3 ribbed V-belts.
- Your choice for standard and customized profiles!



Quick clamp device for
inserting the profiles.



Automatic unlocking
starts off lateral pressure.



Precise welding thanks
to constant pressure.