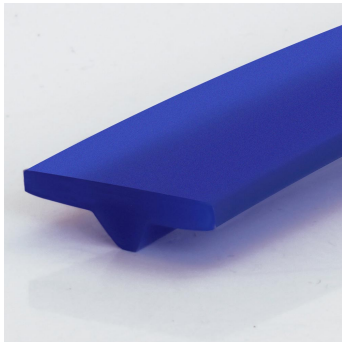


T-Profiles

**PU80A ultramarine blue smooth**



Article no.	Dimensions	Cross section	approx. weight	Standard roll		Recommended min. pulley ØØ		Fmax/belt (standard)	
	mm	cm <sup>2</sup>	kg/100m	m	ft	mm	inch	kg	lbs
FBTJ15X5L	15x5	0,4	4,8	50	164	40	1,6	9,6	21,1

approx. 84° Shore A

Recommended Pretension 4...8%

Coeff. of friction  $\mu$  steel approx. 0,65

Coeff. of friction  $\mu$  PE approx. 0,35

Coeff. of friction  $\mu$  HDPE approx. 0,3

FDA/EC compliant

**Characteristics**



**FDA (Food and Drug Administration)**

FDA/EC conformity for direct food contact

The above information is the result of in-house quality testing. They do not contain any guarantee of properties and in particular do not contain any statements about the suitability of the product for specific purposes, so that no claims against us can be derived from them. In particular, the information does not release the purchaser from his obligation to inspect incoming goods.

Subject to change without notice - 04/2025